



PMI Western Australian Chapter NEWSLETTER

STAY CONNECTED



WWW.WAPMI.ORG.AU

NEXT CHAPTER MEETING

13 August 2014
@ 6:00pm

City West Receptions, 45 Plaistowe
Mews, West Perth, WA 6005

ALSO IN THIS EDITION

August Professional Development Workshop

With Tracey McGrath

PMI Australia Conference 2014

What's On
August 2014

One Great Tip to Help Control Scope

Christian Bisson

GENERAL

[Webcast](#)

Will Earn You PDU's

PMI Australia Conference 2014 Speakers

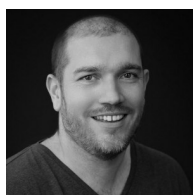


The 2014 PMI Australia Conference at Crown Melbourne is next month.

Registration is still open for you to join us from 8 - 10 September 2014 and share in the opportunity of hearing from a wide range of distinguished speakers.

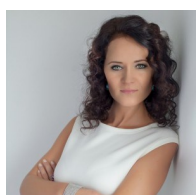
In past editions we have introduced keynote speakers including the Hon Jeff Kennett and Mark Wild (CEO of Public Transport Victoria).

In addition to these keynote speakers the conference will also feature:



Dom Price, Head of R&D Program Management at Atlassian with responsibilities spanning 5 global R&D centres. In a past life he has also

been the GM Program Management for a global gaming company and a Director of Deloitte providing assurance and consulting services across the areas of project management, product management, IT systems and change management.



Agnieszka Maria Gasperini, a certified Project Manager (PMP & PMI -ACP) with fifteen years experience in International Projects and

is fluent five languages.

Agnieszka provides strategic and tactical aid in all aspects of project management including selecting and securing the optimal EU assistance program as well as all employees training and development. She works also as a Coach (ICF) and Mentor for numerous project teams. She is running her company PMC since 2003 and now she is Managing Director EMEA in "Practical Thinking Group".



Dr Cyril Jankoff who works in Australia and Asia as a consultant and speaker in contracting and has taught contract-type subjects since 1986. Cyril holds current legal and accounting practising certificates. He is on the Advisory Council of, and is the Australian contact for, the International Association for Contract and Commercial Management (IACCM), a large US-based contract and commercial management organisation catering for the needs of both buyers and sellers.

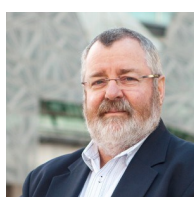


Until July this year, **Meredith Angwin** was leading NAB's portfolio governance and project delivery organisation
Continued on [page 2](#)....

PMI Australia Conference 2014 Speakers (continued)

which provides services across the enterprise delivering NAB's business change programs.

She sponsored the Projects @NAB initiative based on Agile values, which is changing how projects and change are governed, planned and delivered at NAB.



Dr Stephen Grey Joined Broadleaf In 1996. His work has spanned resources, infrastructure, IT, communications,

climate change, and public sector projects in Australia, New Zealand, the UK, South Africa, the Philippines, the USA and Canada. Stephen has a particular interest in modelling uncertainty in costs, schedules, cash flows and other metrics. He wrote one of the first books to describe project cost and schedule uncertainty modelling and has been at the forefront in developing modelling techniques ever since.



Tony Payling is a director and the founder of Calibre Business Integration. He has over 15 years' experience in post-merger integration and business transformation programs for large Australian and multinational organisations, as well as federal and

state government.



For the last nine years **Lindsay Whitehead** has been a Project Management Practice Lead for Computer Sciences Corporation (CSC), based in Melbourne, Australia, and is responsible for applications and transition programs/projects that are managed out of Australia or New Zealand. Lindsay has academic qualifications in mathematics, project management, education, quality and business administration (from Australian Universities) and strategic planning (Cornell University, USA). He has been a PMI member since 2005, and is a Past President of the PMI Melbourne, Australia Chapter. Currently Lindsay is the Community Manager of the PMI Service and Outsourcing Community of Practice.



Dr Alicia Aitken has extensive experience in assessing and improving organisational project, and portfolio management capability and specialist expertise in designing, implementing and evaluating project management competency models for the assessment and development of project management

resources. She has worked with many Human Systems Network organisations over the years to ensure that their approach and their implementation of development programmes meet their specific needs and goals.



Daniel Musson is the inaugural Group CEO of the newly merged Australian Institute of Management.

The fireworks and celebrations that signalled the start of 2014 also signalled the historic merge of the previously state and territory run divisions of the Australian Institute of Management to form a truly national organisation after almost 75 years of history. Daniel's role enables him to combine his corporate experience and entrepreneurship with his passion for management and leadership development.



Bronwyn Clere is the Executive Director, Capital Planning for Telstra Corporation.

Bronwyn joined Telstra in December 2012. Her career has been focused in the Financial Services industry where she has held senior transformation, operations management, finance and change roles globally.

What's on in August?

13 August 2014

Project Management
Toastmasters
(CityWest)

13 August 2014

WA PMI Chapter
Meeting [\[Book Now\]](#)

20 August 2014

WA PMI Professional
Development
Workshop [\[Book Now\]](#)

23 July 2014

Project Management
Toastmasters
(Woodside Plaza)

August Chapter Meeting

For our July Chapter Meeting **Richard Mickle** will speak on the transformation of Perth with a focus on the new Elizabeth Quay development.

The Elizabeth Quay project presents the first and most significant step in

reconnecting Perth with its most important asset, the Swan River. The new waterfront will be a seamless extension of the city grid to the river, creating an inlet that brings water back to the city's doorstep. The project will create a

world class place for the enjoyment of locals and visitors, where public access is optimised and the focus of activities is on the pedestrian experience. It will be a mixed use precinct where a diverse range of activities take place, day and night, all year round. It will show case architectural excellence in quality and design. Most importantly it will reflect the life and identity of the Western Australian community including an opportunity to celebrate indigenous culture.

Remember—you also earn PDU's for attending so don't delay in booking your place for this Chapter event. [\[Book Now\]](#)



August Professional Development Workshop

The August WA PMI workshop will be run by Tracey McGrath of Tracey McGrath International, and will examine how to communicate more effectively with project stakeholders. In particular effective approaches to difficult conversations.

Projects have various stakeholders – each with unique perspectives and personalities. Irrespective of our level of interpersonal skill, it is

inevitable that people clash. An effective project manager needs to be able to successfully manage these diverse relationships whilst keeping their eye on achieving the project objectives.

Conflict is like 'mould in the shower', ignoring it doesn't make it go away. Indeed, leave it long enough and not only does it spread, it also invades the grout with the ultimate result that the entire bathroom

needs redoing at considerable cost and effort.

"From Conflict to Cooperation" is a half day interactive program aimed at increasing participant's confidence and effectiveness in tackling those difficult conversations. [\[Book Now\]](#)

Details:

Cost: \$202 for PMI WA Chapter Members / \$321 Non-Members

20 August 2014 9am - 12.30pm

One Great Tip to Help Control Scope

Christian Bisson wrote this article on controlling scope. You can read more on his [blog](#)...

As project managers, controlling scope can be very challenging.

You'll want to avoid scope creep but if managed properly, scope changes can mean more budget. At first glance, this seems like a good thing, and in a way, it is. But there are a few others aspects to verify.

Be careful For example, you can negotiate more time to the schedule, but this can result in the project dragging over a long period of time, and actually never end.

Continued on next page

One Great Tip to Help Control Scope - Continued

Another aspect to watch out more is as scope changes, team motivation diminishes. People need to close down projects and move on to the next challenge.

Still in the subject of team members, depending on how your organization work with resources, team members may not be available past the initial deadline planned. This may result in resource switches that add risk or cost to your project.

Projects should have goals too, and often goals are tied to a time-sensitive subject like an event, a new product, a contest, etc. By dragging these projects, the project goals may not be met. So the tip?

Negotiate a scope freeze!

A great way to protect the project is to negotiate a scope freeze with stakeholders. This means that nothing gets changed until the current scope is completed. This doesn't mean that planning for the next phase cannot start prior to the first one being done, it's even suggested to start planning phase 2 while phase 1 is being completed, assuming you can secure the necessary resources of course.

Not every stakeholder may approve of this, they might feel secure with the idea that they can ask for any change any time, so it will be important to be diplomatic when discussing this and avoid forcing it upon them. Focus on

the success of the project and the dangers of allowing constant changes.

Keep a backlog

If changes are requested or mentioned, it doesn't mean they should be ignored. Anything that has been discussed, even if a scope freeze was negotiated, should be noted in a backlog and reviewed when planning for a future phase.

It would be a great waste to forget all of those ideas.

Read this article in it's original format at [The PM Hut](#)

PMI Event Sponsorship Opportunities

The Chapter offers opportunities for you to promote your business through sponsorship of the monthly Chapter meeting. Standard sponsorship packages at two levels are available.

Emerald

- Logo and sponsorship status on PMI WA events page and link to
- Sponsor's website
- Logo on event slideshow presentation and on event collateral
- Distribute promotional materials at the event
- Set up a display at event
- Provide a five minute presentation at the beginning of the event
- relevant to members (content subject to PMI approval)
- Four free entries for event
- One Emerald sponsor per event

Investment for this level is \$1250

Ruby

- Logo and sponsorship status on PMI WA events page and link
- to Sponsor's website
- Logo on event slideshow presentation and on event collateral
- Distribute promotional materials at the event
- Two free entries for event

Investment for this level is \$350

Speak to a [board member](#) for more information about these or alternatively these packages can be customised to suit your needs.

If you would like to contribute an article to the WA PMI Newsletter then please contact the Communications Director at the email address below and you could see your article distributed to fellow project management professionals across the state and beyond.

Editor / Communications Director : Rob Hurst communications@wapmi.org.au
Administration: Jo Saunders admin@wapmi.org.au

Advertisement opportunities exist. For details contact [Rob Hurst](#) - Marketing Director